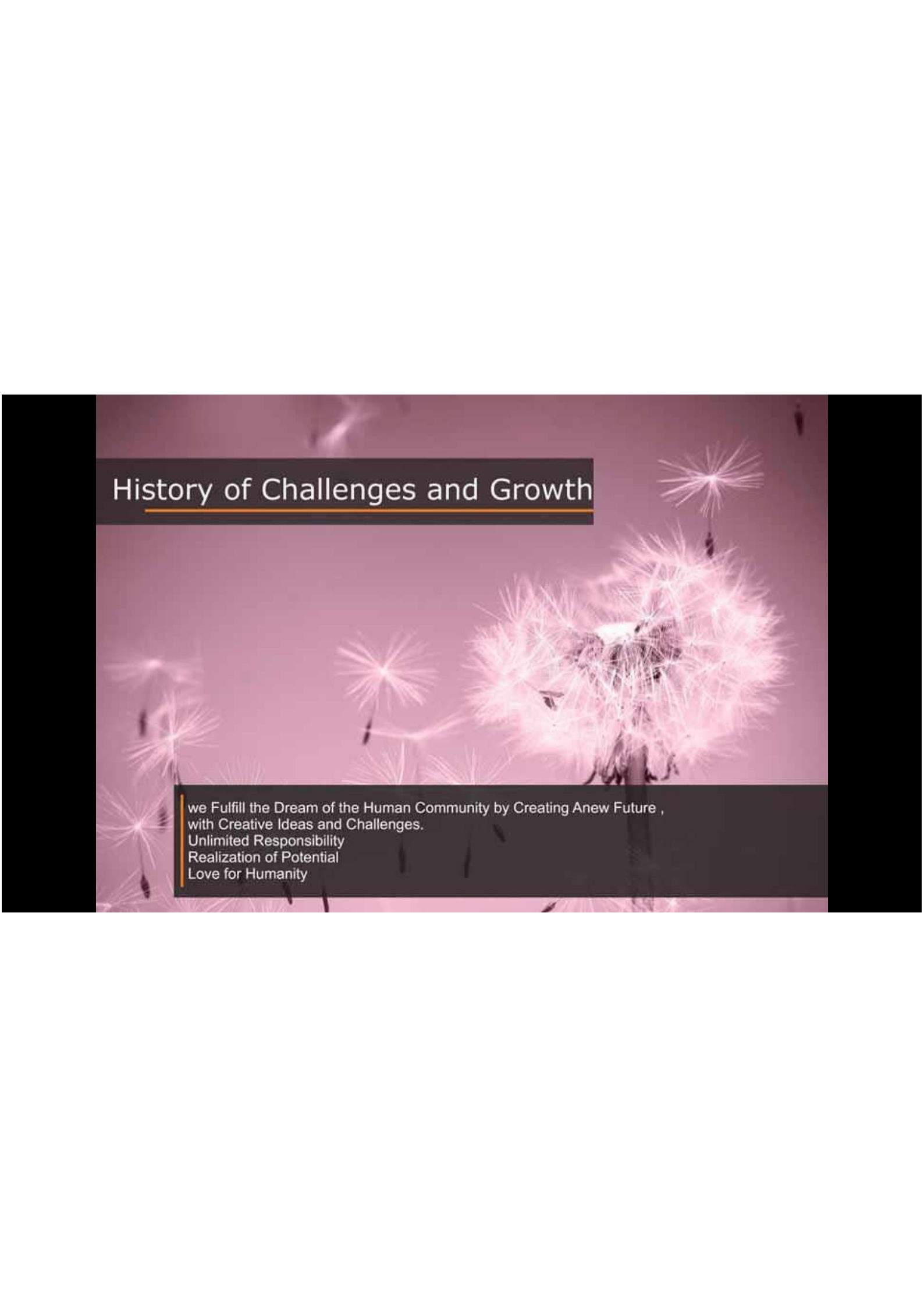






**-A Global Leader in Engineering, Procurement,
Construction and Project Management**
-SBR COMPANY with Over 18 Years of Experience
**-Our Mission: Sustainable and Executive
Solutions to Achieve Customer Satisfaction**



History of Challenges and Growth

we Fulfill the Dream of the Human Community by Creating Anew Future ,
with Creative Ideas and Challenges.
Unlimited Responsibility
Realization of Potential
Love for Humanity

SBR INTERNATIONAL COMPANY



PROFILE

Close to 110 Skilled Employees



Based in 3 Offices

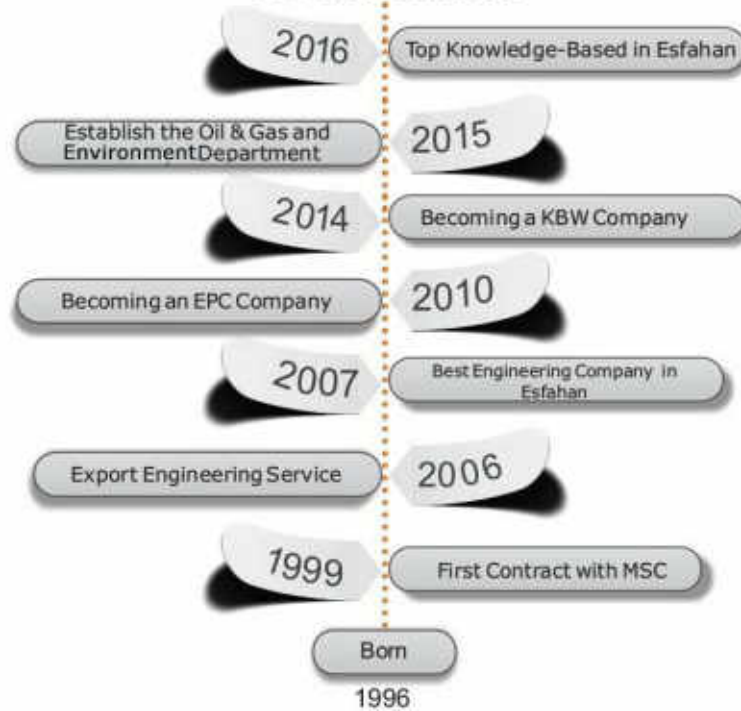
Total Revenues in 2015
250 Billions IRR



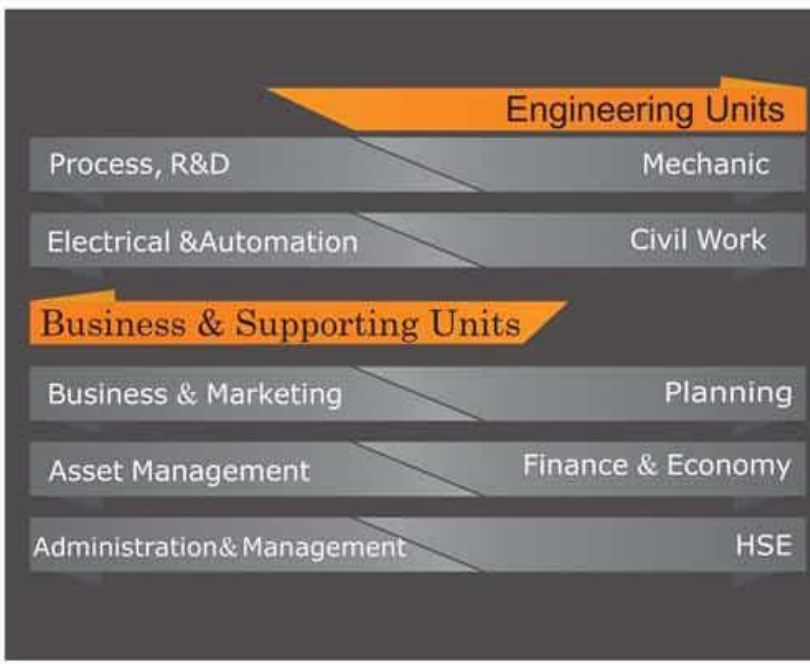


HISTORY

Our Story Continues



Organization



SBR INTERNATIONAL COMPANY



FIELDS OF BUSINESS



SBR INTERNATIONAL COMPANY



SBR's REFERENCE PROJECTS



SBR INTERNATIONAL COMPANY



CERTIFICATES



Quality Management system



Appreciation Letter as Top Knowledge-Based



Architectural Prize



Specialist Grade Certification of Banking & Credit Investment Consultant Center



Consultant Engineering Certification of Vice-Presidency



Appreciation Letter of SMS Group



Appreciation Letter of Mearz



Technology License

SBR INTERNATIONAL COMPANY



MINE

Major Projects
Different Client

We Create your Dreams



SBR INTERNATIONAL COMPANY



STEEL

{ Engineering Solutions to Industry Challenges }

Major Projects
Different Client



فولاد آهاری ایران



SBR INTERNATIONAL COMPANY



Environmental

From Concept until Creating

Major Projects
Different Client





QUALITY



SBR INTERNATIONAL COMPANY



MAJOR PROJECT

Gol-Gohar Pelletizing Plant No2 in EPC Basis



Client : Gol-E-Gohar
Consortium Partner : Kayson
Location: Sirjan-Kerman
Technology Provider: Outotec
Start Date: 2012
Capacity (first Phase): 5MTY

SBR INTERNATIONAL COMPANY



GOL-E-GOHAR



SBR INTERNATIONAL COMPANY



MAJOR PROJECT

Fooladsang lime plant in EPC Basis



Client:MSC
Owner: Fooladsang
Plant Specification:
Charging lime stone size:
10-70mm
Number of kiln: 2 Vertical
Chisaki Lime kiln
Capacity: 2 x400TPD

SBR INTERNATIONAL COMPANY



FOOLAD SANG



SBR INTERNATIONAL COMPANY



MAJOR PROJECT

Goharzamin Pelletizing Plant NO.2



Client : Asphalt Tousco
Owner : Goharzamin
Location: Sirjan-Kerman
Technology Provider: Outotec
Start Date: 2014
Capacity(first Phase): 5MTY



SBR INTERNATIONAL COMPANY



MAJOR PROJECT

Sangan Iron Ore Concentrate Plant



Client: Kayson
Owner : KSE
Location :Sangan
Technology Provider :Outotec
Start Date : 2014
Capacity: 2.5MTY

SBR INTERNATIONAL COMPANY



MAJOR PROJECT

MC Services: Saba Steelmaking expansion Project



Client : MSC
Location: Esfahan
Technology Provider: Daniell
Start Date: 2012
Plant Specification:
CSP Plant

SBR INTERNATIONAL COMPANY

SABA STEELMAKING EXPANSION PROJECT



SBR INTERNATIONAL COMPANY



MAJOR PROJECT

MC Service : Reconstruction of the Existing RM650 to Produce Rail U33 and UIC60



Client: ESCO
Owner: ESCO
Plant Specification:
Capacity: 240,000tpy
Range of product: UIC 60, U33
H Profile

SBR INTERNATIONAL COMPANY



RM 650 TO PRODUCE RAIL U33 AND UIC 60





MIDA Steel Making & HRM Plant

- Client: South Rouhina Steel co
- Location:Dezful
- Start Date :2014
- Technology Provider :Danieli
- Capacity : 450,000 TPY



Rouhina HRM Rebar Plant

- **Client:** South Rouhina Steel co
- **Location:** Dezful
- **Start Date:** 2014
- **Technology Provider:** Danieli
- **Capacity:** 450,000 TPY



- Client: Sepid Dasht
- Location: Charmahal Va Bakhtiari
- Start Date: 2018
- Technology Provider: Danieli
- Capacity: 800,000 TPY



SBR INTERNATIONAL COMPANY



MAJER PROJECT

Zinc Concentrate Production
with BZS Method on EPC Basis



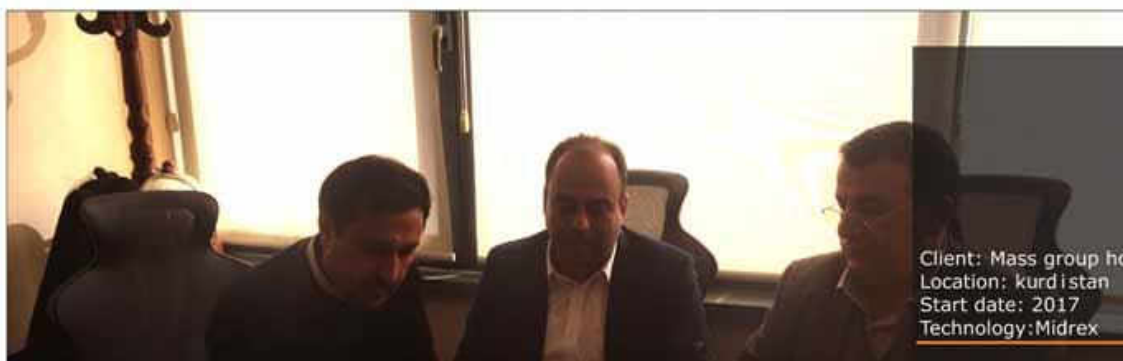
Client: Calcimin Company
Owner : IZMDC
Location: Zanjan-Iran
Start date: 2016
Capacity : 318(TPD)
Consortium partner:
Rasool Machin

SBR INTERNATIONAL COMPANY



MAJER PROJECT

MC Services :DR Plant



Client: Mass group holding
Location: kurd i stan
Start date: 2017
Technology:Midrex

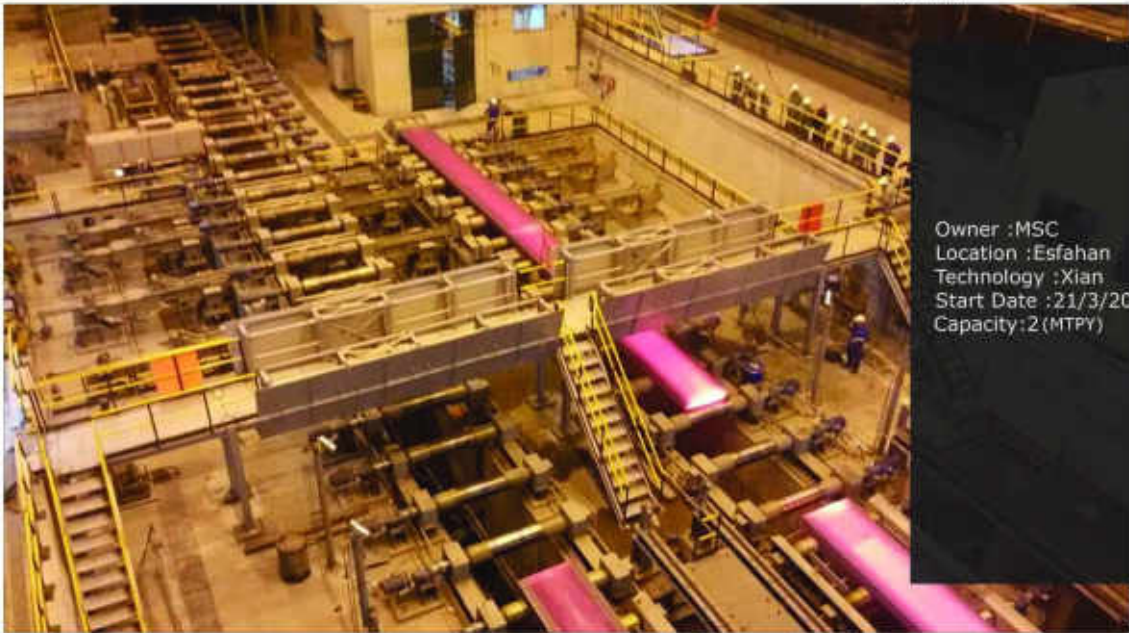


SBR INTERNATIONAL COMPANY



MAJOR PROJECT

Continuous Casting Machine (NO.5)
(CCM5)



Owner :MSC
Location :Esfahan
Technology :Xian
Start Date :21/3/2014
Capacity:2 (MTPY)

SBR INTERNATIONAL COMPANY



Continuous Casting Machine (NO.5)(CCM5)

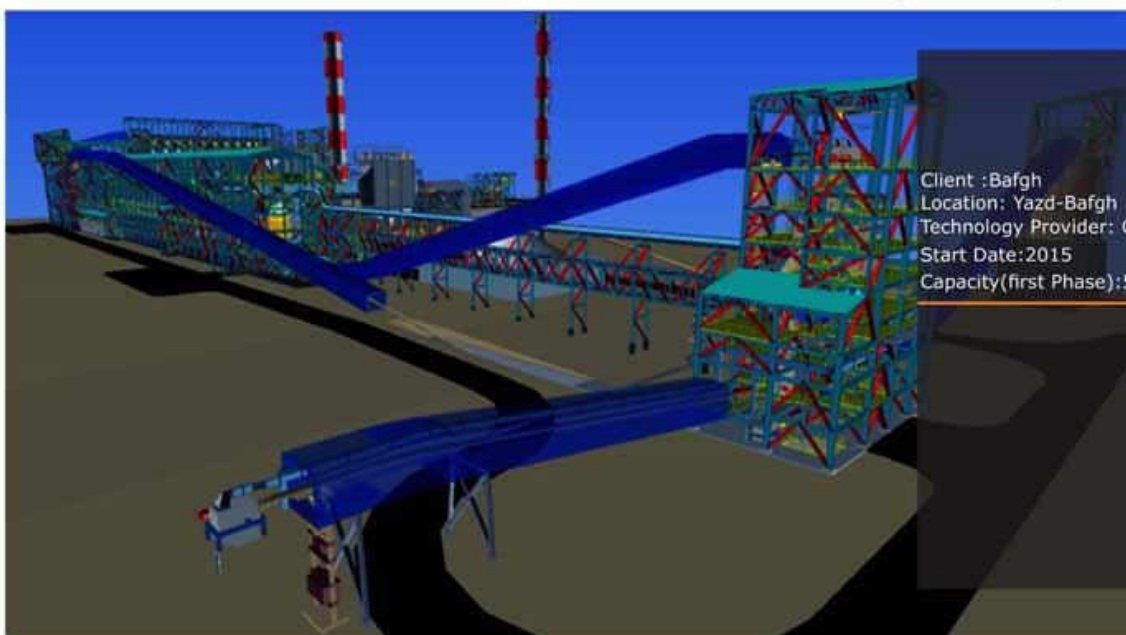


SBR INTERNATIONAL COMPANY



MAJOR PROJECT

MC Services: Bafgh Pelletizing Plant



Client : Bafgh
Location: Yazd-Bafgh
Technology Provider: Outotec
Start Date: 2015
Capacity (first Phase): 5MTY

SBR INTERNATIONAL COMPANY



MAJOR PROJECT

Steel Making (Yazd 1)



Client: Iran Alloy Steel Company
Location :Yazd
Technology Provider :saralle
Start Date : 2014
Plant Specification:
Melting and Casting
Capacity:700,000 TPY

SBR INTERNATIONAL COMPANY



MAJOR PROJECT

Rouhina HRM Rebar Plant



Client :
South Rouhina Steel Complex
Location : Dezful
Technology Provider : Danielel
Start Date : 2014
Plant Specification :
Rebar Mill
Capacity : 450,000TPY

SBR INTERNATIONAL COMPANY



MAJOR PROJECT

MIDA Steel Making & HRM Plant



Client:
South Rouhina steel complex
Location :Dezful
Technology Provider :Danieli
Start Date :2014
Plant Specification:
Minimill-Danieli(MI-DA)
Capacity : 450,000(TPY)

SBR INTERNATIONAL COMPANY



MAJOR PROJECT

Stacker Reclaimer
Counter weight Frame Design & Analysis



Client: Ashton bulk
Plant Specification:
Conveying Material: coal
Conveying Capacity: 7200TPH

SBR INTERNATIONAL COMPANY



MAJOR PROJECT

Stacker Reclaimer
Counter weight Frame Design & Analysis



Client: Ashton bulk
Owner: INT
Plant Specification:
Conveying Material: coal
Conveying Capacity 10,000 Tph

SBR INTERNATIONAL COMPANY



MAJOR PROJECT

Persian Gulf Saba Steel – HDRI Plant

Client: Saba Steel Persian
Gulf Saba Steel
Owner: Saba Steel Persian
Gulf Saba Steel
Plant Specification:
1.500.000 T/a (Mega Module)
HDRI- Mega Module including:
Hot briquetting



SBR INTERNATIONAL COMPANY



MAJOR PROJECT

Chahar Mahal Bakhtiyari Steel Complex



Owner: NISCO
Plant Specification:
Capacity: 800,000 (tpy)
Technology: Midrex
Status: Under Construction

SBR INTERNATIONAL COMPANY



MAJOR PROJECT

Sabzevar Steel Complex



Owner: NISCO
Plant Specification:
Capacity: 800,000 (tpy)
Technology: Midrex

SBR INTERNATIONAL COMPANY



MAJOR PROJECT

Esfahan Refinery-Loading Petroleum Product on EPC Basis



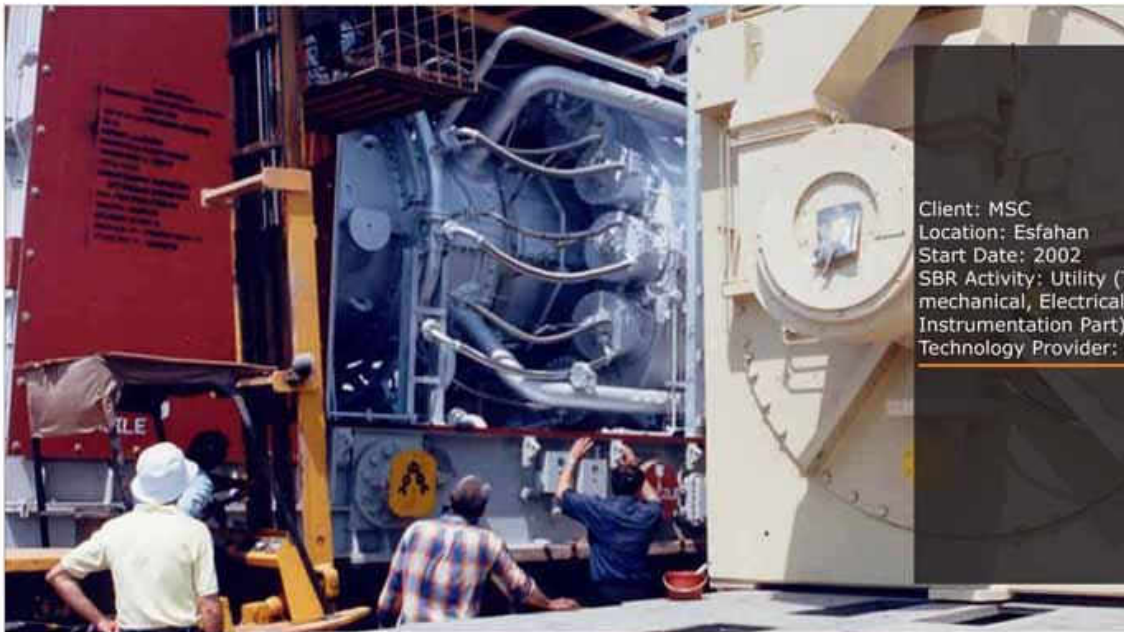
Client: Esfahan Refinery
Location: Esfahan
Start Date: 2016
Construction Partner :
Petro Texan

SBR INTERNATIONAL COMPANY



MAJOR PROJECT

MC & Engineering Services for MSC in Power Plant Unit



Client: MSC
Location: Esfahan
Start Date: 2002
SBR Activity: Utility (The
mechanical, Electrical &
Instrumentation Part)
Technology Provider: GE

SBR INTERNATIONAL COMPANY



MAJOR PROJECT

MC & Engineering Services for MSC Oxygen Unit



Client: MSC
Location: Esfahan
Start Date: 2002
SBR Activity: Utility
(The mechanical, Electrical
& Instrumentation Part)

SBR INTERNATIONAL COMPANY



MAJOR PROJECT

Engineering Services for Ammonium Dosing System in ESCo Power Plant



Client: Esfahan Steel Co.
Location: Esfahan
Start Date: 2012

SBR INTERNATIONAL COMPANY



MAJOR PROJECT

Engineering Services for Training Fire Fighting Plant



Client: Tabriz Petrochemical
Complex
Location: Tabriz
Start Date: 2007
Technology Provider: Haagen

SBR INTERNATIONAL COMPANY



MAJOR PROJECT

MC & Engineering Services for Administrative building & laboratory of Iranian Oil Terminal (North Plant)



Client: IOTC
Location: Neka
Start Date: 2009

SBR INTERNATIONAL COMPANY



MAJOR PROJECT

Engineering Services for Reconstruction and Optimization of NIOPDC (Rey)



Client: NIOPDC
Location: Tehran
Start Date: 2007

SBR INTERNATIONAL COMPANY



FOREIGN COOPERATORS



MINE



ashton bulk
materials handling



Outotec



STEEL

Outotec **SMS
SIEMAG**

SMS group

KÜTTNER



SBR INTERNATIONAL COMPANY



MAJOR PROJECT

SBR Company Building



Owner: SBR
Location: Isfahan,
Science & Technology Town
Description: 2800m²
Period: 2013~2015

REFERENCE LIST

Project Name	Client	Location	Year
MC & Engineering Services for Main & Secondary Roads	MSC	Esfahan	2000
Engineering Services for Galvanized & Color Coating Plant	MSC	Esfahan	2000
Engineering Services for Material Handling System in Sarcheshmeh Copper Complex	IRITEC	Kerman	2000
Engineering & Supervision Services for Fixing the Cracks of Roof Cranes	MSC	Esfahan	2000
MC & Engineering Services for Cold Mill Expansion Plant	MSC	Esfahan	2001
Structural Analysis for Steel Structure & Belt Conveyors	MSC	Esfahan	2001
Engineering Services for Coil Storage of PU 52	MSC	Esfahan	2001
Engineering Services for Material Handling System in Songon Copper Complex	IRITEC	Kerman	2001
Supervision Services for Steel Structure & Roof Cranes	MSC	Esfahan	2001
Engineering Services for Auxiliary Buildings of Galvanized & Color Coating Plant	MSC	Esfahan	2001
Engineering Services for Increasing the Capacity of Material Handling System, Lime Kiln and DR Plant	MSC	Esfahan	2002
MC & Engineering Services for Power Plant & Oxygen Plant Expansion	MSC	Esfahan	2003



REFERENCE LIST

Project Name	Client	Location	Year
Supreme & Site Supervision Services for New Pickling Line	MSC	Esfahan	2003
Engineering Services for Hot Strip Mill Expansion	MSC	Esfahan	2003
Engineering Services for Hot Strip Mill Expansion	MSC	Esfahan	2003
Technical Inspection Services for Steel Structure & Cranes	Nassoz Mehr Co	Sepid Dasht	2003
Engineering Services, Including Basic and Detail Design of Civil & Structures, Electrical and Instrumentation of Oxygen, Hydrogen and Emulsion Plants	Ghaem Copper Co	Esfahan	2003
MC & Engineering Services for Construction of Nassoz Mehr Co	MSC	Esfahan	2003
Engineering Services for Ghaem Copper Plant	Nassoz Mehr Co	Sepid Dasht	2004
Engineering Services for Walking Beam of Hot Strip Mill	Gilan Regional Water	Gilan	2004
MC & Engineering Services for Powder Cement Plant of Nassoz Mehr Co	AuthorityAtrak Co	Esfahan	2005
Inspection Services for Hydromechanics Equipment's of Water Diversion Tunnel in Shafarood Dam	Mazandaran Regional Water Authority	Mazandaran	2005
MC & Engineering Services for Civil, Steel Structure, Mechanical, Electrical and Instrumentation of Atrak Paper Plant	Footad Afza Co	Esfahan	2005
Technical Inspection Services for Waste Water Treatment Plant of Jubar City	Ayeq Sepahan Co	Esfahan	2005



REFERENCE LIST

Project Name	Client	Location	Year
Engineering Services for Calcined Dolomite Production Line with Vertical Kiln	Foolad Afza Co.	Esfahan	2005
Engineering Services for Construction of Ayeq Sepahan Plant	Ayeq Sepahan Co.	Esfahan	2005
Supervision Services for Fluid and Electrical Units	MSC	Esfahan	2006
Engineering Services for Main & Auxiliary Structures of Cold Mill Expansion	MSC	Esfahan	2006
Engineering Services for Lime and Calcined Dolomite Production Line with Vertical Kiln	KSC	Khuzestan	2006
Engineering and Inspection Services For Foundation Equipment and Steel Structure	Natanz Steel Co.	Natanz	2006
Engineering Services for Architectural and Structural Drawing & Electrical & Mechanical Installation of Amphitheater in Shahreza University	Shahreza University	Esfahan	2006
MC & Engineering Services for Car Dumper No.2 and Material Handling Systems in MSC	MSC	Esfahan	2007
Engineering Services for Galvanized Steel Sheet in Automotive Sector	CBASCO	ChaharMahal Bakhtiari	2007
Technical Inspection Services for Steel Structure & Cranes	MSC	Esfahan	2007
Engineering & Supervision Services for Revamping of Furnaces No. 3 to 6	MSC	Esfahan	2007



REFERENCE LIST

Project Name	Client	Location	Year
MC & Engineering Services for Kerman Gas Co. Buildings	Kerman Gas Co.	Kerman	2008
Engineering Services for Training Fire Fighting Plant	TPCO	Tabriz	2007
MC & Engineering Services for Revamping of MSC Continues Casting Machine	MSC	Esfahan	2008
Engineering Services, Including Basic and Detail Design of Civil & Structures, Mechanical, Electrical and Instrumentation of Sabzevar DR Plant	MMTE	Sabzevar	2008
MC & Engineering Services for SABA Steel Making Plant	MSC	Esfahan	2008
Engineering Services for Dedusting channels in South Kave Steel Co.	MMTE	Hormozgan	2008
Engineering Services for Yazd Alloy Steel Plant Expansion	Iran Alloy Steel Co	Yazd	2009
Engineering Services, Including Basic and Detail Design of Civil & Structures, Mechanical, Electrical and Instrumentation of RH-TOP Project	MSC	Esfahan	2009
MC & Engineering Services for Buildings & Roads of Continues Rolling Mill	MSC	Esfahan	2009
Engineering Services for Expansion of Continues Casting Machine No.	MSC	Esfahan	2009
Engineering Services for Administrative Buildings & Laboratory of Iranian Oil Terminal (North Plant)	IOTC	Neka	2009
Technical Inspection for Steel & Concrete Structures and Roof Cranes	MSC	Esfahan	2009



REFERENCE LIST

Project Name	Client	Location	Year
Engineering Services for Ramsar Domicile Cooperative	Ramsar Domicile Cooperative	Ramsar	2009
Consultancy Services For Coke Making Plant	IMIDRO	Mazandaran	2009
MC Services for Sine Profile Plant	Saze Moj Pershia	Esfahan	2009
Engineering Services for 8 De dusting System in Zam Zam II	MMTE	Khuzestan	2009
Engineering Services for De dusting Systems in Sefid Dasht Steel Complex	MMTE	Chaharmahal Bakhtiari	2009
Engineering Services for De dusting Systems in South	MMTE	Hormozgan	2009
MC Services for Kharazi Steel Making	Kayson	Esfahan	2010
Engineering Services for Material Handling System of Briquette Plant in Saba	MMTE	Esfahan	2010
Engineering Services for Car dumper System of DR Plant	MMTE	Chaharmahal Bakhtiari	2010
Engineering Services for Foolad Gharb Asia	Foolad Gharb Asia	Tehran	2010
Engineering and Supervision Services for Qazvin Landfill and leachate Treatment Plant	Qazvin Municipality	Qazvin	2010
Engineering Services for Civil and Structure Unit in Khorasan Steel Co	Khorasan Steel Co	Khorasan	2011
Engineering Services for Lime Production Line with Vertical Kiln	Hirad shimi Co	Tehran	2011
Engineering Services for Waste Transfer Station	Qazvin Municipality	Qazvin	2011



REFERENCE LIST

Project Name	Client	Location	Year
Engineering Services for Material Handling and Dedusting Systems of Lime Kiln	ESCO	Esfahan	2011
Engineering Services for Landfill Waste Position	Qazvin Municipality	Qazvin	2011
Supreme & Site Supervision for Landfill Waste Position and the Waste Water Treatment Plant in Mahmudabad	Qazvin Municipality	Qazvin	2011
Engineering Services for Waste Transfer Station	Qazvin Municipality	Qazvin	2011
Engineering Services for Civil work of Atlas Machine Plant	Atlas Machine Co.	Esfahan	2011
Engineering Services, Including Basic and Detail Design of Civil & Structures, Mechanical, Electrical and Instrumentation of RH-TOP Project	MSC	Esfahan	2011
Engineering & Inspection Services for Civil & Steel Structure and Roof Cranes	MSC	Esfahan	2012
Engineering Services, Including Basic and Detail Design of Civil & Structures, Mechanical, Electrical & Instrumentation of RH-TOP Project	MSC	Esfahan	2012
Engineering Services for Wet Dedusting in SABA Steel Expansion	MSC	Esfahan	2012
Engineering & Supervision Services for SABA Steel Expansion	MSC	Esfahan	2012
Feasibility Study for SABA Steel Expansion	MSC	Esfahan	2012
Engineering Services for Increasing the Capacity of Steel Melting Furnaces to 7.2 MTPY	MSC	Esfahan	2012



REFERENCE LIST

Project Name	Client	Location	Year
MC Services for Continuous Casting Machine No.5 and Revamping and increasing Capacity of Ladle Furnaces 1,2,7,8	MSC	Esfahan	2012
Consultancy Services for Saba Expansion	MSC	Esfahan	2012
Engineering, Procurement and Construction of Gole-e-Gohar Pelletizing Plant with capacity of 5MTPY	GolGohar Mining & Industrial Co.	Sirjan	2012
Engineering, Procurement and Construction of FooladSang Lime Plant with Capacity of 2*400 TPD	FooladSang	Esfahan	2012
Engineering Services for Fire Fighting and Fire Alarm of Kharazi MEGA Modules as EPC	MSC	Esfahan	2012
Engineering Services for Fire Fighting and Fire Alarm in Saba	MSC	Esfahan	2012
MC Services for Civil, Structures, Electrical and Mechanical Design For HOSCO	HOSCO	Hormozgan	2012
MC & Engineering Services for ESCO Expansion Project	ESCO	Esfahan	2012
Engineering, Procurement and Construction of Gohar zamin Pelletizing Plant with capacity of 5MTPY	Gohar zamin	Sirjan	2013
Engineering Services including Basic & Detail Design of Civil& Structures, Mechanical and Electrical Utilities in MIDA Steel Making	South Rohina Steel Co	Khuzestan	2013
Engineering Services including Basic & Detail Design of Civil& Structures, Mechanical and Electrical Utilities in Rebar Mill	South Rohina Steel Co	Khuzestan	2013



REFERENCE LIST

Project Name	Client	Location	Year
Engineering Services for Yazd Steel Making Plant with Capacity of 700,000 TPY	Iran Alloy Steel Co	Yazd	2014
Feasibility Study for Alloy Steel Making Plant with Capacity 300,000 TPY Sarakhs Akhgar Steel Co	Sarakhs Akhgar Steel Co	Khorasan	2014
MC & Engineering Services for ESCO Expansion Project	ESCO	Esfahan	2014
Engineering & Supervision Services for Reconstruction of the Existing RM 650 to produce Rail u33& UIC60	ESCO	Esfahan	2014
MC Services for AFA Steel Making with Capacity 400,000TPY	Azar Foolad Amin	Tabriz	2014
Engineering Services for Sangan Iron Ore Concentrate Plant with Capacity of 2.5 MTPY	KSC	Khorasan	2014
MC Services for Bafgh Pelletizing Plant with Capacity of 5MTPY	Bafgh	Yazd	2015
Zinc Concentrate Production With BZS Method on EPC Basis	Calcimin	Zanjan	2016
Esfahan Refinery-loading Petroleum Product	Esfahan Refinery	Esfahan	2016
Consultancy Services for Ghaenat DR Plant and Melt Shop	Ghaenat industry Steel Co	Ghaenat	2016
Engineering Services of Cold Slag Processing Plant	MSC	Esfahan	2016
Engineering & Consultancy Services for bentonite Plant	Gohar Poudr pars	Sirjan	2016
MC Services for Saqqez DR Plant	Foolad Gostar Almass (Mass Group Holding)	Kurdistan	2017

SBR INTERNATIONAL COMPANY



SBR OFFICE

Main Office:
NO.26.Alley 31.Vozara St. Tehran.Iran./Tel:0098(21)88795895-6



Norway Office:
Lundekron 34.1396 Billingstand.Norway./Tel:004793254451

Esfahan Office:
NO.14.Street No.12.Sheikh Bahae Science & Technology Park.Esfahan
Science & Technology Town.Esfahan.Iran./Tel:0098(31)33932133-33932134-33932176-33932235



SBR: From Idea to Action/Production or Construction

Thank You for Attention