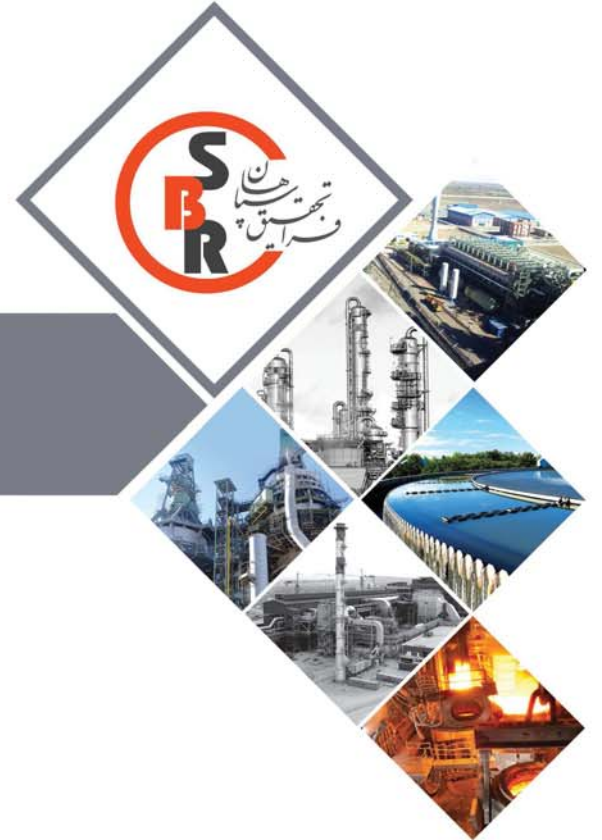
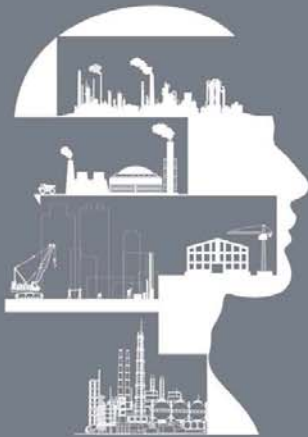


WWW.SBR-CO.COM





You can Trust us in Industrial Projects
as Consultant and EPC Contractor

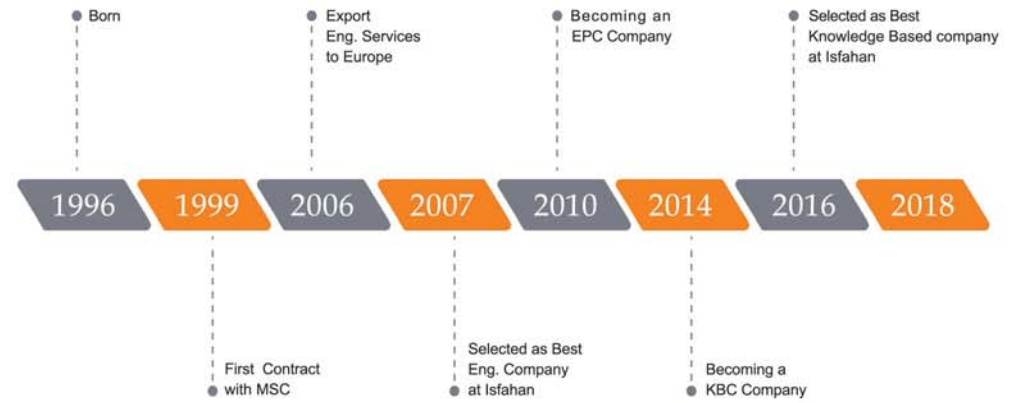
Content

| | | | |
|----|-------------------------|----|-----------------------|
| 2 | Vision | 17 | Fields of Services |
| 3 | SBR Profile | 19 | SBR Reference Project |
| 7 | Board of Directors | 21 | Major Project |
| 8 | Management Team | 33 | Client |
| 9 | Honors and Certificates | 36 | Foreign Cooperators |
| 12 | Organization Chart | 37 | Reference List |
| 15 | Fields of Business | 47 | Contacts |



*An Iranian Leader in Engineering, Procurement,
Construction and Project Management*

SBR Profile





Offices

Based in 3 offices



Staffs

More than 100 Skilled Employees



Revenues

Total Revenue in 2018 : 5 milion dollars

Board of Directors



Hamid Saadatnia
Managing Director



Amirkhalil Beheshti
Chairman of the Board



Dr-Kamran Koushan
Board of Directors



Mohamadreza Hosseinian
Board of Directors



Farhad Naderi
Board of Directors

Management Team



Mahmood Firoozi
Business Development Director



Alireza Mohammadzadeh
Engineering Director



Ali Mir
Project Manager



Mohammadkarim Oreizi
Project Manger



Saman Karimi
Project Manger

Honors & Certificates



Top Knowledge -Based
Company Prize



Top Engineering Company
MIMT Prize



Appreciation Letter of
SMS Group



MIMT Technical Engineering
License Certificate



ISO/ TS 2900:12010
Certificate



ISO 14001:2015 Certificate



ABCIC membership and
ranking Certificate



MPORG Contractor
Certificate



MPORG Consulting
Certificate



ISO 9001:2015 Certificate

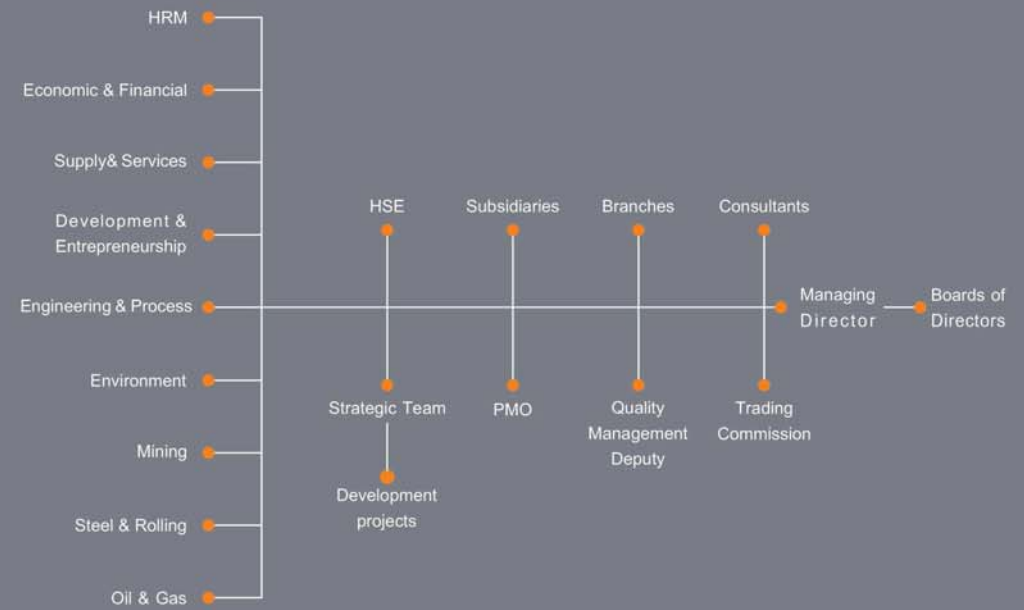


OHSAS 18001:2007
Certificate



HSE-MS Certificate

Organization Chart





Oil & Gas

- Refineries & Petrochemical Plants
- Pumping & Compressor Station
- Industrial Manufacturing Plants
- Pipelines & Tank Farms
- Gas Injection Project



Steel & Rolling

- Melt Shop
- Casting Plants
- Rolling Mills
- Steel Making Plant Auxiliary



Mining

- Pelletizing Plant
- Concentrate Plant
- Lime & Dolomite Plant
- Copper Plant



Environment

- Waste Management
- Air Pollution & Control
- New Energies
- Environmental Management
- Environmental Education
- Water & Waste
- Water Treatment



Engineering & Process

- DCC
- Road & civil & Landscape
- Quality Assurance Engineering
- Layout & 3D Modeling
- Fluid Mechanics
- Piping
- Industrial Air conditioners
- Fire Safety System
- Rotating Equipment



Engineering & Process

- Technology & Process & R&D
- Structures & Architecture
- Automation & Instrumentation
- Cost Estimation
- Power Electricity
- Solid Mechanics
- Fix Equipment
- Machine Design
- Material Handling



Development & Entrepreneurship

- Innovation & Technology Commercialization
- Market Development
- Technical and Financial Proposal
- Contracts
- Public Affairs & Advertising
- Foreign Market Development



Supply & Services

- Purchase
- Contracts
- Technical Inspection & Quality Assurance & Purchase
- Project Support Services
- Storage Projects



Economic & Financial

- Economic & Financial
- General Accounting
- Management Accounting
- Control Contracts



HRM

- Planning & Absorption
- Training & Development
- Administrative & Support Services
- ICT

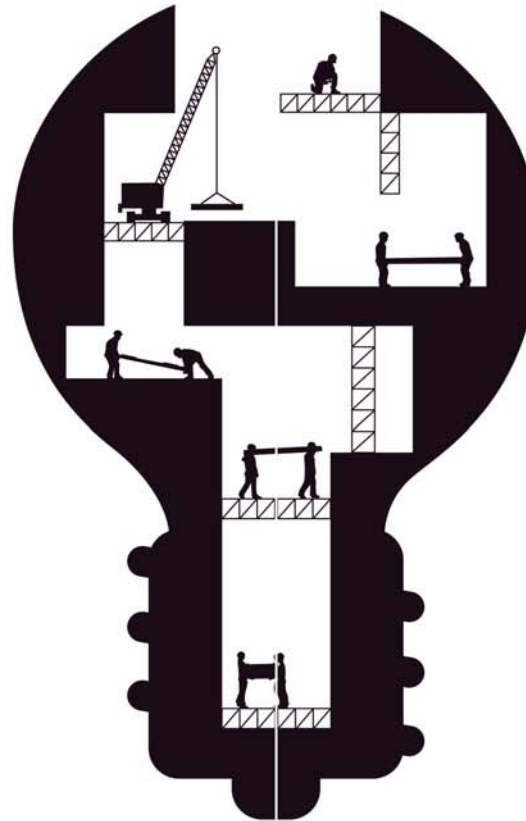
Fields of Business



Fields of Services

Research & Development

- Latest research & Literature review
- Evaluation of industrial limitations
- Innovation and Expansion of Idea
 - Pilot Plant
 - Industrializing
 - Digitalization



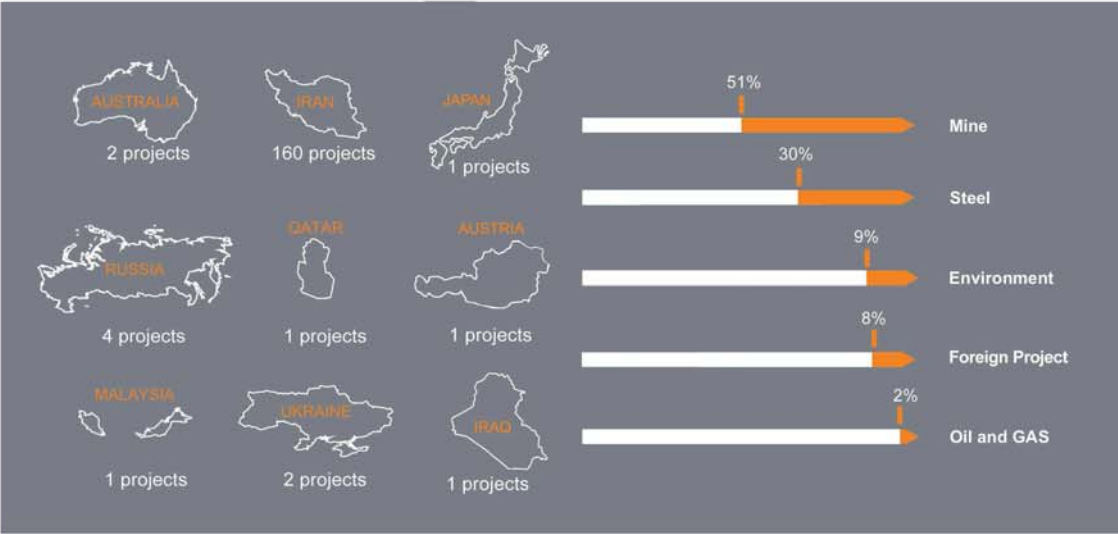
Engineering

- Feasibility & Conceptual Studies
- Techno-Commercial evaluation
- Basic Design & Detail Design
- QA & QC approval Inspection
- MC & Supervision
- Process Evaluation and Optimization
- Problem Analysis
- Risk Management

EPC

- Basic and Detail Engineering
- Procurement
- Construction
- Cold and Hot Commissioning
- Operation & Supervision
- Project Management
- HSE

SBR Reference Projects



Major Projects



Client : Gol-e-Gohar
Project Type : EPC
Location : Sirjan
plant specification
Technology : Outotec
Capacity : 5 Mtpy
Start : 2012
End : 2016
Status : in operation



GOL-E-GOHAR
PELLETIZING
Plant No.2 on EPC Basis



SBR Building

Owner: SBR.Co
Project Type : EPC
Location: Science & Technology Town
State date: 2013
Description: 2,800 m²
Ent: 2015

Sangan Iron Ore Concentrator Plant on EPC Basis

Owner : Khorasan Steel Company
Project Type : Engineering
Location : Sangan
Technology : Outotec
Capacity : 5 Mtpy
Start : 2014
Status : in progress



Gohar Zamin Pelletizing Plant on EPC Basis

Owner : Gohar Zamin
Project Type : Engineering
Location : Sirjan
Technology : Outotec
Capacity : 5 Mtpy
Start : 2014
Status : in progress



Foolad Sang Lime Plant on EPC Basis

Client : MSC
Project Type : EPC
Location : Isfahan
Technology : Chisaki
Capacity : 2x400 tpd
Start : 2012
End : 2018
Status : in operation





MIDA Steel Making & HRM at SRSC

Client : SRSC
 Project Type : Engineering
 Location : Dezful
 Technology : Danieli
 Capacity : 450,000 tpy
 Start : 2014
 Status : in operation
 End: 2018



Reconstruction Existing RM650 to Produce Rail U33, UIC 60

Client : ESC
 Project Type : MC
 Location : Isfahan
 Technology : Kuttner
 Capacity : 240,000 tpy
 Start : 2014
 End : 2018
 Status : in operation

SABA Steelmaking (CSP)
 Plant Expansion

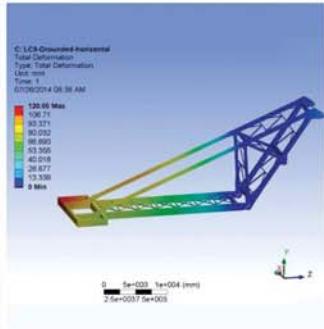
Client : MSC
 Project Type : MC
 Location : Isfahan
 Technology : Danieli
 Capacity : 1.7 Mtpy
 Start : 2012
 End : 2018
 Status : in operation



Yazd I steel Making Plant

Client : IASCO
 Project Type: Engineering
 Location : Yazd
 Technology : Saralle
 Capacity : 700,000 tpy
 Start : 2014
 End : 2016
 Status : Finished





Stacker-Reclaimer Frame Design

Client : Ashton Bulk
Project Type : Engineering
Location : Australia
Capacity : 7,200 tph
Mat. conveying : Coal
Start : 2015
Status : Finished

Stacker-Reclaimer Frame Design

Client : Ashton Bulk
Project Type : Engineering
Location : Australia
Capacity : 10,000 tph
Mat. conveying : Coal
Start : 2015
Status : Finished



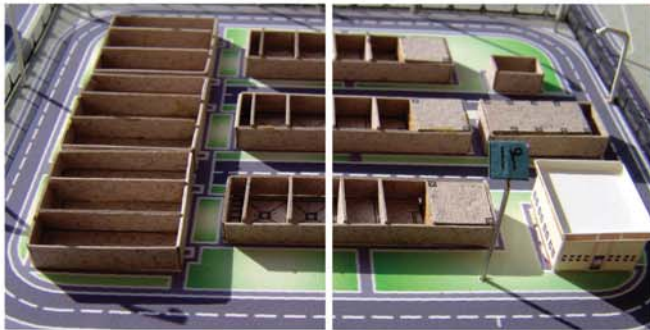
Esfahan Refinery- Loading Petroleum Product

Client: Esfahan Refinery
Project Type: EPC
Location: Isfahan
Start: 2016
Status: in Progress

Zinc Concentrate Production by BZS Method

Client : Calcimin
Project Type : EPC
Location : Zanjan
Capacity : 320 tph
Start : 2016
End : 2018
Status : in operation





Qazvin MSW Leachate Treatment Plant

Client : Qazvin Municipality
 Project Type : Engineering & supervision
 Location : Qazvin
 Hydraulic Capacity : 60 m³ PD
 Process Capacity : 30 m³ PD
 Start /End Engineering : 2007-2009
 Strat/End Supervision : 2011-2015

Settler for Steel making & Coke making

Client : ESCO
 Project Type : Engineering & Supervision
 Location : Isfahan
 Start : 2015
 End : 2016
 Status : in operation



Slab Continuous Casting Machine #5

Client : MSC
 Project Type : Engineering
 Location : Isfahan
 Technology : Xian
 Capacity : 2 Mtpy
 Start : 2014
 End : 2016
 Status : in operation



Material Handling for DR Plant

Client : MMTE
 Owner : NISICO
 Project Type : Engineering
 Location : Sabzevar
 Capacity : 1 Mtpy
 Mat. Handled : DRI & Pellet
 Start : 2008
 End : 2012
 Status : in operation



Direct Reduction Plant at Saqqez

Client : Mass Group
Project Type : MC
Location : Saqqez
Technology : Midrex
Capacity : 1 Mtpy
Start : 2017
Status : in progress



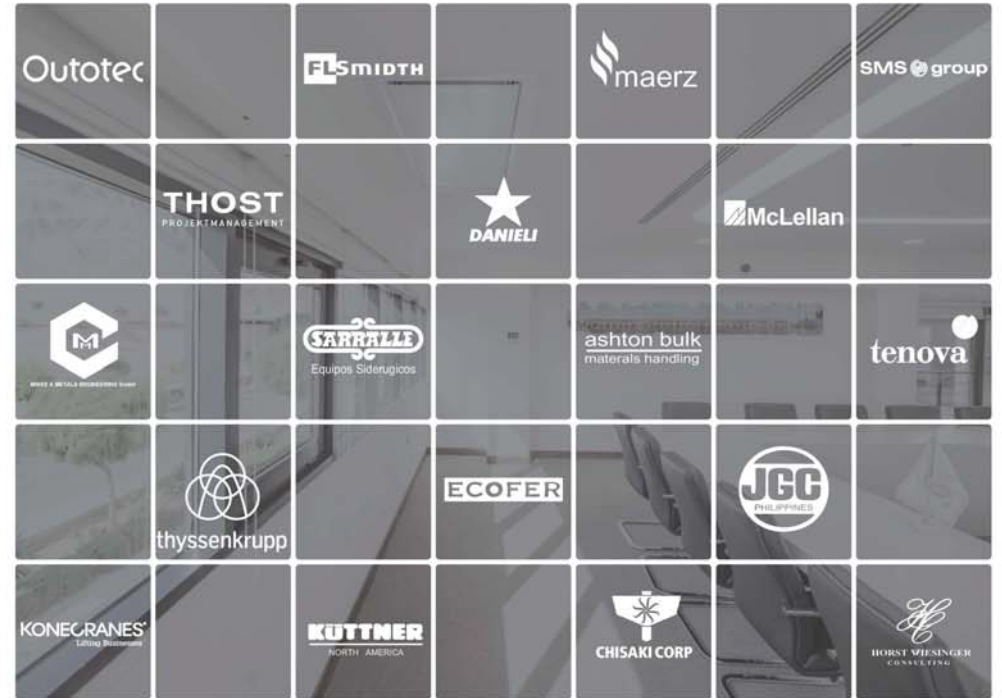
Material Handling for DR Plant

Client : MMTE
Owner : NISICO
Project Type : Engineering
Location : CHBK
Capacity : 1 Mtpy
Mat. Handled : DRI & Pellet
Start : 2008
End : 2012
Status : in operation

Clients



Foreign Cooperators



Reference List

| Project Name | Client | Location | Start | Project Name | Client | Location | Start |
|---|----------------------------|-----------------------|-------|--|----------------------------|-----------|-------|
| EPC for Ferroalloy Material Handling | MSC (SABA) | Isfahan | 2019 | EPC of Calsimin Zinc Concentrate Production With BZS Method | Calcimin | Zanjan | 2016 |
| Engineering& supervision for Existing Hematite and Desulfurization plant | Gol-E-Gohar | Sirjan | 2019 | EPC of Isfahan Refinery-loading Petroleum Product | Isfahan Refinery | Isfahan | 2016 |
| MC & Engineernig Services for Increasing Capacity of Pelletizing Plant No.1&2 | Gol-E-Gohar | Sirjan | 2019 | Engineering Services for Yazd Steel Making Plant.700.000 TPY | Iran Alloy Steel Co | Yazd | 2014 |
| MC Services for Saqqez DR Plant. 1MTPY | Mass Group Holding(Iraq) | Kurdistan | 2017 | Feasibility Study for Alloy Steel Making Plant , 300,000 TPY | Sarakhs Akhgar Steel Co | Khorasan | 2014 |
| Engineering Services for Slab Cooling Storage Expansion | MSC | Isfahan | 2017 | MC & Engineering Services for ESCO Expansion Project | ESCO | Isfahan | 2014 |
| Engineering Services for Slurry transfer | MSC | Isfahan | 2017 | Engineering & MC Services for Reconstruction of the Existing RM 650 to produce Rail u33& UIC60 | ESCO | Isfahan | 2014 |
| Engineering Services for Material Handling System in MIDA Steel making Plant | South Rohina Steel Complex | Khuzestan | 2017 | Engineering Services for Bucket Wheel Stacker Reclaimer Counter Weight Frame Design | Ashton Bulk | Australia | 2014 |
| Engineering Services for Renovation of Dust Collection System | Khuzestan Steel Company | Khuzestan | 2017 | Engineering Services for Sangan Iron Ore Concentrate Plant. 2.5 MTPY | KSC | Khorasan | 2014 |
| EPC of Renovation of Dust Collection System For concentrate Plant | Gol-E-Gohar | Sirjan | 2017 | Engineering Services For Gohar zamin Pelletizing Plant. 5MTPY | Gohar zamin | Sirjan | 2013 |
| Engineering Services for Hot Rolling Mill Expansion | MSC | Isfahan | 2017 | Engineering Services For MIDA Steel Making Plant.500.000TPY | South Rohina Steel Complex | Khuzestan | 2013 |
| Feasibility Study and Tendering for Billet Casting Machine.800.000TPY | Sefid Dasht Steel | ChaharMahal Bakhtiari | 2017 | Engineering Services For Rebar Rohina Mill.500.000TPY | South Rohina Steel Complex | Khuzestan | 2013 |
| Feasibility Study and Tendering for Alloy Steel Making Plant , 300.000 TPY | Steel Car System | Tehran | 2017 | Engineering & Inspection Services for Civil & Steel Structure and Roof Cranes | MSC | Isfahan | 2012 |
| Engineering Services for Stack Yards and Railways For ESCO Site | ESCO | Bandar Abbas | 2017 | | | | |

Reference List

| Project Name | Client | Location | Start | Project Name | Client | Location | Start |
|--|----------------------------------|-----------|-------|---|---------------------|-----------------------|-------|
| Engineering Services for Wet Scrubber in SABA Steel Expansion | MSC | Isfahan | 2012 | Engineering Services for Civil work of Atlas Machine Plant | Atlas Machine Co. | Qazvin | 2011 |
| Engineering Services for Increasing the Capacity of Steel Melting Furnaces to 7.2 MTPY | MSC | Isfahan | 2012 | Feasibility Study for Hot Strip Mill No.2. 4.4 MTPY | MSC | Isfahan | 2011 |
| EPC of Gole-e-Gohar Pelletizing Plant 5MTPY | GolGohar Mining & Industrial Co. | Sirjan | 2012 | MC Services for Continuous Casting Machine No.2 and Revamping and increasing Capacity of Ladle Furnaces 1,2,7,8 | MSC | Isfahan | 2011 |
| EPC of FooladSang Lime Plant. 2x400 TPD | FooladSang | Isfahan | 2012 | Feasibility Study, MC and Engineering Services for Saba Expansion.1.7 MTPY | MSC | Isfahan | 2011 |
| EPC of Fire Fighting and Fire Alarm of Kharazi DR Plant | MSC | Isfahan | 2012 | Engineering Services for Material Handling System of DRI Briquette Plant in Saba Steel Making Plant | MMTE | Isfahan | 2010 |
| Engineering Services for Fire Fighting and Fire Alarm in Saba | MSC | Isfahan | 2012 | Engineering Services for Truck Unloader System of CHBK DR Plant | MMTE | Chaharmahal Bakhtiari | 2010 |
| MC Services for Hormazgan Steel Company | HOSCO | Hormozgan | 2012 | Engineering Services for Foolad Gharb Asia | Foolad Gharb Asia | Tehran | 2010 |
| Engineering Services for Civil and Structure Unit in Khorasan Steel Co | Khorasan Steel Co | Khorasan | 2011 | Engineering Services for Yazd Alloy Steel Plant Expansion | Iran Alloy Steel Co | Yazd | 2009 |
| Engineering Services for Lime Production Line with Vertical Kiln | Hirad shimi Co | Tehran | 2011 | Engineering Services of RH-TOP Project in Steel Making | MSC | Isfahan | 2009 |
| Engineering Services for Waste Transfer Station | Qazvin Municipality | Qazvin | 2011 | | | | |
| Engineering Services for Material Handling and Dedusting Systems of Lime Kiln | ESCo | Isfahan | 2011 | | | | |
| Engineering & Supervision Services for Landfill Waste Position and the Waste Water Treatment Plant in Mahmudabad | Qazvin Municipality | Qazvin | 2011 | | | | |

Reference List

| Project Name | Client | Location | Start | Project Name | Client | Location | Start |
|--|-----------------------------|-----------------------|-------|---|-------------------|-----------------------|-------|
| MC & Engineering Services for Buildings & Roads of Continues Rolling Mill | MSC | Isfahan | 2009 | Engineering Services for Material Handling System in Sabzevar DR Plant | MMTE | Sabzevar | 2008 |
| Engineering Services for Expansion of Continues Casting Machine No.5 | MSC | Isfahan | 2009 | Engineering Services for Dust Collection System of South Kave Steel Co (SKS). | MMTE | Hormozgan | 2008 |
| Engineering Services for Administrative Buildings & Laboratory of Iranian Oil Terminal (North Plant) | IOTC | Neka | 2009 | MC & Engineering Services for Car Dumper No.2 and Material Handling Systems | MSC | Isfahan | 2007 |
| Technical Inspection for Steel & Concrete Structures and Roof Cranes | MSC | Isfahan | 2009 | Engineering Services for Galvanized Steel Sheet in Automotive Sector | CBASCO | ChaharMahal Bakhtiari | 2007 |
| Engineering Services for Ramsar Domicile Cooperative | Ramsar Domicile Cooperative | Ramsar | 2009 | Technical Inspection Services for Steel Structure & Cranes | MSC | Isfahan | 2007 |
| Engineering Services for Lime Production Plant 200 TPD | Maerz | Russia | 2009 | Engineering & Supervision Services for Revamping of Furnaces No. 3 to 6 | MSC | Isfahan | 2007 |
| MC Services For Coke Making Plant | IMIDRO | Mazandaran | 2009 | Engineering Services for Civil and Structural Work of Pars Zagros Plant | Pars Zagros Co | Isfahan | 2007 |
| MC Services for Sine Profile Plant | Saze Moj Pershia | Isfahan | 2009 | MC & Engineering Services for Energy and Fluid Plantt Expansion | MSC | Isfahan | 2007 |
| Engineering Services for Dust Collection Systems in CHBK Steel Complex | MMTE | Chaharmahal Bakhtiari | 2009 | Engineering Services for Qazvin Technology Park | Qazvin University | Qazvin | 2007 |
| MC Services for Anode Furnace No. 4 in Sarcheshmeh Copper Complex | NICICO | Kerman | 2008 | Engineering Services for Administrative Buildings | Qazvin University | Qazvin | 2007 |
| Engineering Services for Material Handling Systems in CHBK DR Plant | MMTE | ChaharMahal Bakhtiari | 2008 | Engineering Services for Vertical Lime Kilns in Sarcheshmeh Copper Complex | NICICO | Kerman | 2007 |
| MC & Engineering Services For Administrative and Auxiliary Buildings | Kerman Gas Co. | Kerman | 2008 | | | | |
| MC & Engineering Services for Revamping of Continues Casting Machine | MSC | Isfahan | 2008 | | | | |

Reference List

| Project Name | Client | Location | Start | Project Name | Client | Location | Start |
|--|-------------------|-----------|-------|---|-------------------------------------|------------|-------|
| Engineering Services for Reconstruction & Optimization of Rey Oil Storage | NIOPDC | Rey | 2007 | Engineering Services for Slag Sizing and Material Handling System | MSC | Isfahan | 2006 |
| Engineering Services for Sarein Therapeutic Recreation Complex | Sarein Iranian Co | Ardebil | 2007 | Engineering Services for Design of Amphitheater in Shahreza University | Shahreza University | Isfahan | 2006 |
| Engineering Services for Dust Collection System of Zamzam II Project in KSC. | MMTE | Khuzestan | 2007 | Engineering Services for Material Handling System in Pelletizing Plant | MSC | Isfahan | 2006 |
| Engineering & Inspection Services for Civil and Steel Structure Work (SMP2) | Natanz Steel Co. | Isfahan | 2007 | Engineering Services for Lime and Calcined Dolomite Production Line with Vertical Kiln | ESCO | Isfahan | 2006 |
| Engineering Services for Training Fire Fighting Plant | TPCO | Tabriz | 2007 | Engineering Services for Calcined Dolomite Production Plant | Maerz | Ukraine | 2006 |
| Supervision Services for Fluid and Electrical Units Expansion | MSC | Esfahan | 2006 | Engineering Services for Calcined Dolomite Production Plant | Maerz | Malasia | 2006 |
| Engineering Services for Main & Auxiliary Structures of Cold Mill Expansion | MSC | Isfahan | 2006 | Engineering Services for Calcined Dolomite Production Plant | Maerz | Russia | 2006 |
| Engineering Services for Lime and Calcined Dolomite Production Line with Vertical Kiln | KSC | Khuzestan | 2006 | Engineering Services for Lime Production Plant , 150TPD | Maerz | Russia | 2006 |
| Engineering and Inspection Services For Foundation Equipment and Steel Structure | Natanz Steel Co. | Natanz | 2006 | MC & Engineering Services of Atrak Paper Plant | Atrak Co | Isfahan | 2005 |
| Engineering Services for DRI Charge to Basket in Mobarakeh Steel Company | MSC | Isfahan | 2006 | Engineering Services for Grinding plant | Asiab Sepahan industrial Company | Isfahan | 2005 |
| | | | | Technical Inspection Services for Waste Water Treatment Plant of Juibar City | Mazandaran Regional Water Authority | Mazandaran | 2005 |
| | | | | Engineering Services for Calcined Dolomite Production Line with Vertical Kiln,2x250 TPD | Foolad Afza Co | Isfahan | 2005 |

Reference List

| Project Name | Client | Location | Start | Project Name | Client | Location | Start |
|---|--------------------------------|-------------------------------|-------|---|--------|----------|-------|
| Engineering Services for Construction of Ayeq Sepahan Plant | Ayeq Sepahan Co | Isfahan | 2005 | Structural Analysis for Steel Structure & Belt Conveyors | MSC | Isfahan | 2001 |
| MC & Engineering Services for Powder Cement Plant | Nasso Mehr Co | Sepid Dasht | 2004 | Engineering Services for Coil Storage of Hot Strip Mill | MSC | Isfahan | 2001 |
| Inspection Services for Hydromechanics Equipment's of Water Diversion Tunnel in Shafarood Dam | Gilan Regional Water Authority | Gilan Reginal Water Authority | 2004 | Engineering Services for Material Handling System in Songon Copper Complex | IRITEC | Kerman | 2001 |
| MC & Engineering Services for New Pickling Line | MSC | Isfahan | 2003 | Supervision Services for Steel Structure & Roof Cranes | MSC | Isfahan | 2001 |
| Engineering Services for Hot Strip Mill Expansion | MSC | Isfahan | 2003 | Engineering Services for Auxilliary Buildings of Galvanized & Color Coating Plant | MSC | Isfahan | 2001 |
| Technical Inspection Services for Steel Structure & Cranes | MSC | Esfahan | 2003 | Engineering Services for Increasing the Capacity of Material Handling System, Lime and DR Plant | MSC | Isfahan | 2001 |
| Engineering Services For utility and auxiliary system Oxygen Plant, Hydrogen Plant and Emulsion Plant | MSC | Isfahan | 2003 | MC & Engineering Services for Main & Secondary Roads | MSC | Isfahan | 2000 |
| MC & Engineering Services for Refractory Plant | Nasso Mehr Co | Sepid Dasht | 2003 | Engineering Services for Galvanized & Color Coating Plant | MSC | Isfahan | 2000 |
| Engineering Services for Ghaem Copper Plant | Ghaem Copper Co | Isfahan | 2003 | Engineering Services for Material Handling System in Sarcheshmeh Copper Complex | IRITEC | Kerman | 2000 |
| Engineering Services for Walking Beam of Hot Strip Mill | MSC | Isfahan | 2003 | Engineering & Supervision Services for Fixing the Cracks of Roof Cranes | MSC | Isfahan | 2000 |
| MC & Engineering Services for Power Plant & Oxygen Plant Expansion | MSC | Isfahan | 2002 | | | | |
| MC & Engineering Services for Cold Mill Expansion Plant | MSC | Isfahan | 2001 | | | | |

Contacts



Isfahan Office:

No. A211, Street No. 12, Isfahan Science & Technology Town, Isfahan, Iran
Tel:0098(31)33931074-83
Tel:0098(31)33932131-4
Fax:0098(31)33932176



Tehran Office:

No.26,Alley31,VozaraSt, Tehran, Iran
Tel:0098(21)88773065-88795895
Fax:0098(21)88774285

Norway Office:

Lundekroken 34,1396 Billingstand, Norway
Tel: 004748091469
Fax: 004748091469